

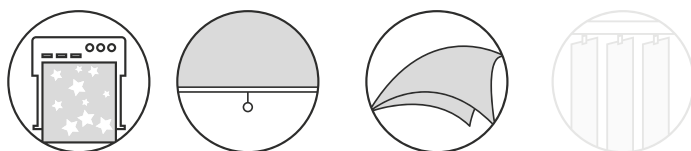


Sergé 1% OF 1%

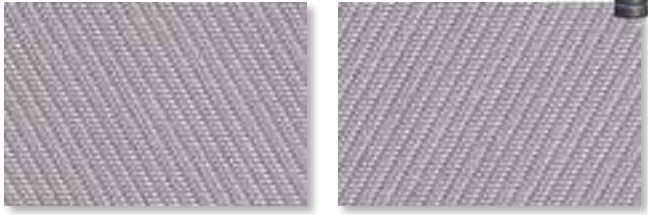
WK01A FABRIC CODE

Screen with a small openness factor to protect even better against heat and glare. Thin and light for more designing possibilities. Very suitable for zip systems.

Can be used both exterior and interior.



108101 grey-white A / B
Widths: 1800, 2500, 2850 mm



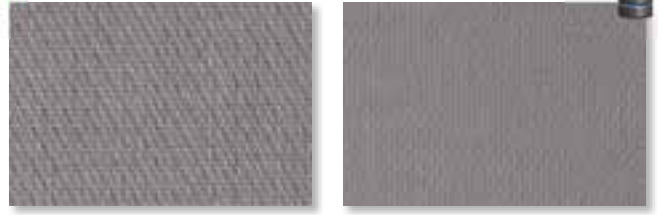
Solar Heat & Light Control Properties

	Ts	Rs	As	Tv	TVdiff	TVdir	Tuv	TVdif-h	Glare control	SUV
A	6.5	32.4	61.1	3.4	2.7	0.7	0.9	2.9	Class 4	Class 4
B	6.5	32.3	61.2	3.4	2.7	0.7	0.9	2.9	Class 4	Class 4

gtot

	A		B		C		D	
	ext.	int.	ext.	int.	ext.	int.	ext.	int.
A Values	0.19	0.53	0.15	0.53	0.10	0.46	0.08	0.28
A Classes	2	0	2	0	3	1	4	2
B Values	0.19	0.53	0.15	0.53	0.10	0.46	0.08	0.28
B Classes	2	0	2	0	3	1	4	2

108108 grey A / B
Widths: 1800, 2500, 2850 mm



Solar Heat & Light Control Properties

	Ts	Rs	As	Tv	TVdiff	TVdir	Tuv	TVdif-h	Glare control	SUV
A	4.8	21.6	73.6	2.2	1.5	0.7	0.9	1.9	Class 4	Class 4
B	4.8	21.6	73.6	2.2	1.5	0.7	0.9	1.9	Class 4	Class 4

gtot

	A		B		C		D	
	ext.	int.	ext.	int.	ext.	int.	ext.	int.
A Values	0.20	0.59	0.15	0.59	0.10	0.50	0.08	0.29
A Classes	2	0	2	0	3	0	4	2
B Values	0.20	0.59	0.15	0.59	0.10	0.50	0.08	0.29
B Classes	2	0	2	0	3	0	4	2

108112 grey-sand A / B
Widths: 1800, 2500, 2850 mm



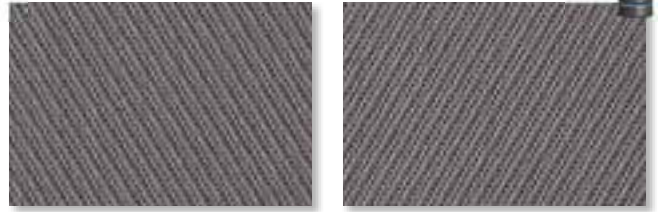
Solar Heat & Light Control Properties

	Ts	Rs	As	Tv	TVdiff	TVdir	Tuv	TVdif-h	Glare control	SUV
A	6.0	26.6	67.4	2.8	2.3	0.5	0.7	2.4	Class 4	Class 4
B	6.0	26.4	67.6	2.8	2.3	0.5	0.7	2.4	Class 4	Class 4

gtot

	A		B		C		D	
	ext.	int.	ext.	int.	ext.	int.	ext.	int.
A Values	0.20	0.57	0.15	0.56	0.10	0.48	0.08	0.29
A Classes	2	0	2	0	3	1	4	2
B Values	0.20	0.57	0.15	0.57	0.10	0.48	0.08	0.29
B Classes	2	0	2	0	3	1	4	2

108118 grey-black A / B
Widths: 1800, 2500, 2850 mm



Solar Heat & Light Control Properties

	Ts	Rs	As	Tv	TVdiff	TVdir	Tuv	TVdif-h	Glare control	SUV
A	2.9	16.0	81.1	1.5	1.1	0.4	0.6	1.3	Class 4	Class 4
B	2.9	16.1	81.1	1.5	1.1	0.4	0.6	1.3	Class 4	Class 4

gtot

	A		B		C		D	
	ext.	int.	ext.	int.	ext.	int.	ext.	int.
A Values	0.20	0.62	0.15	0.61	0.09	0.52	0.08	0.29
A Classes	2	0	2	0	4	0	4	2
B Values	0.20	0.62	0.15	0.62	0.09	0.52	0.08	0.29
B Classes	2	0	2	0	4	0	4	2

117101 pearl-white A / B
Widths: 1800, 2500, 2850 mm



Solar Heat & Light Control Properties

	Ts	Rs	As	Tv	TVdiff	TVdir	Tuv	TVdif-h	Glare control	SUV
A	13.6	46.9	39.5	11.9	11.5	0.4	0.8	10.5	Class 2	Class 4
B	13.6	47.2	39.3	11.9	11.5	0.4	0.8	10.5	Class 2	Class 4

gtot

	A		B		C		D	
	ext.	int.	ext.	int.	ext.	int.	ext.	int.
A Values	0.21	0.46	0.17	0.46	0.12	0.42	0.09	0.27
A Classes	2	1	2	1	3	1	4	2
B Values	0.21	0.46	0.17	0.46	0.12	0.42	0.09	0.27
B Classes	2	1	2	1	3	1	4	2

117108 pearl-grey A / B
Widths: 1800, 2500, 2850 mm



Solar Heat & Light Control Properties

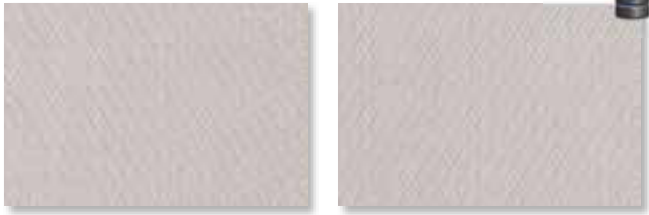
	Ts	Rs	As	Tv	TVdiff	TVdir	Tuv	TVdif-h	Glare control	SUV
A	8.4	31.4	60.2	6.1	5.7	0.4	0.8	5.4	Class 3	Class 4
B	8.4	31.5	60.1	6.1	5.7	0.4	0.8	5.4	Class 3	Class 4

gtot

	A		B		C		D	
	ext.	int.	ext.	int.	ext.	int.	ext.	int.
A Values	0.20	0.54	0.16	0.54	0.11	0.47	0.09	0.28
A Classes	2	0	2	0	3	1	4	2
B Values	0.20	0.54	0.16	0.54	0.11	0.47	0.09	0.28
B Classes	2	0	2	0	3	1	4	2

117117

pearl A / B
Widths: 1800, 2500, 2850 mm



Solar Heat & Light Control Properties

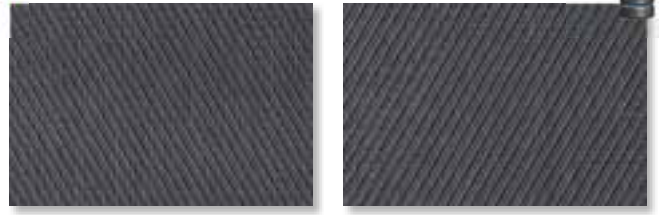
	Ts	Rs	As	Tv	TVdiff	TVdir	Tuv	TVdif-h	Glare control	SUV
A	12.0	38.9	49.1	10.4	10.0	0.3	0.7	9.2	Class 3	Class 4
B	12.0	38.9	49.1	10.4	10.0	0.3	0.7	9.2	Class 3	Class 4

g_{tot}

	A		B		C		D	
	ext.	int.	ext.	int.	ext.	int.	ext.	int.
A Values	0.21	0.50	0.18	0.50	0.12	0.44	0.09	0.27
A Classes	2	0	2	0	3	1	4	2
B Values	0.21	0.50	0.18	0.50	0.12	0.44	0.09	0.27
B Classes	2	0	2	0	3	1	4	2

118108

black-grey A / B
Widths: 1800, 2500, 2850 mm



Solar Heat & Light Control Properties

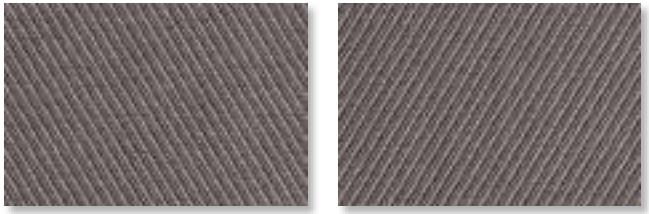
	Ts	Rs	As	Tv	TVdiff	TVdir	Tuv	TVdif-h	Glare control	SUV
A	0.8	10.2	89.0	0.6	0.3	0.3	0.5	0.5	Class 4	Class 4
B	0.8	10.1	89.1	0.6	0.3	0.3	0.5	0.5	Class 4	Class 4

g_{tot}

	A		B		C		D	
	ext.	int.	ext.	int.	ext.	int.	ext.	int.
A Values	0.20	0.65	0.14	0.64	0.08	0.53	0.08	0.30
A Classes	2	0	3	0	4	0	4	2
B Values	0.20	0.65	0.14	0.64	0.08	0.53	0.08	0.30
B Classes	2	0	3	0	4	0	4	2

118112

black-sand A / B
Widths: 1800, 2500, 2850 mm



Solar Heat & Light Control Properties

	Ts	Rs	As	Tv	TVdiff	TVdir	Tuv	TVdif-h	Glare control	SUV
A	0.8	14.0	85.2	0.5	0.4	0.1	0.2	0.4	Class 4	Class 4
B	0.8	14.0	85.2	0.5	0.4	0.1	0.2	0.4	Class 4	Class 4

g_{tot}

	A		B		C		D	
	ext.	int.	ext.	int.	ext.	int.	ext.	int.
A Values	0.19	0.63	0.14	0.62	0.08	0.52	0.07	0.30
A Classes	2	0	3	0	4	0	4	2
B Values	0.19	0.63	0.14	0.63	0.08	0.52	0.07	0.30
B Classes	2	0	3	0	4	0	4	2

118118

black A / B
Widths: 1800, 2500, 2850 mm



Solar Heat & Light Control Properties

	Ts	Rs	As	Tv	TVdiff	TVdir	Tuv	TVdif-h	Glare control	SUV
A	0.4	6.69	92.9	0.3	0.2	0.2	0.3	0.3	Class 4	Class 4
B	0.4	6.69	92.9	0.3	0.2	0.2	0.3	0.3	Class 4	Class 4

g_{tot}

	A		B		C		D	
	ext.	int.	ext.	int.	ext.	int.	ext.	int.
A Values	0.20	0.67	0.15	0.66	0.08	0.55	0.08	0.30
A Classes	2	0	2	0	4	0	4	2
B Values	0.20	0.67	0.15	0.66	0.08	0.55	0.08	0.30
B Classes	2	0	2	0	4	0	4	2

Sergé 1%

OF 1%

WK01A

FABRIC CODE

Yarn

Technical specifications	Average Values	Standard
Titer	165 tex	ISO 1889 (2009)
Weighted composition	Glass 41.5%, PVC 58.5%	ISO 3801 (1977)
Diameter	0.38 mm	

Fabric

Type of fabric	PVC-coated fiberglass fabric
Weave pattern	twill weave
Widths	1800, 2500, 2850 mm other widths on demand
Roll length (nominally)	50 m / 2850 mm: 40 m

Technical specifications	Average Values	Standard
Thickness	0.60 mm	ISO/DIS 5084.2 (1996)
Mass	474 g/m ²	ISO 3801 (1977)
Fire resistance	M1 FR	NF P92-503 (1995) NFPA 701 (2010)
Breaking strength	warp 290 daN, weft 210 daN	ISO 13934-1 (1999)
Elongation at break	warp 6,2%, weft 4.4%	ISO 13934-1 (1999)
Tear resistance	warp 9,5 daN, weft 10 daN	ISO 4674 part 1 method A (2003)
Colorfastness (white excluded)	6 scale of blue	ISO 105 B02 (1994)
Air porosity	374 l/m ² /sec	ISO/DIS 9237 (1995)

Processing

General - specifications are purely indicative and may not be considered as binding. Colors may vary from the samples shown.

Cutting	crush or ultrasonic; railroad or width out of roll width
Welding	thermal, HF, ultrasonic, sewing
Cleaning	remove dust from the fabric surface, then wipe gently with a humid soft sponge while using a mild detergent

A division of the brand

MERMET

HELIOSCREEN nv

Dijkstraat 26 | Industriezone E17/1080 | 9160 Lokeren - Belgium
T. +32 (0)9 348 90 00 | F. +32 (0)9 348 06 69 | fabrics@helioscreen.com

WWW.HELIOSCREEN.COM